



Bristol and West  
Branch

Powered by  
**volunteers**

# Branch Meeting

21 March 2024

In collaboration with AOSH

<https://iosh.com/get-involved/events/event-listings>

# **WELCOME**

**Come in**

**Grab a Coffee**

**Network & find friends**

**We start at 10:00**



Bristol and West  
Branch

## Branch Programme 2024

Powered by  
**volunteers**

April – 9<sup>th</sup> Site visit to Hempsted Composting and Inert Landfill Restoration facility

May – 23<sup>rd</sup> H&S Consultancy and working with employers – Webinar. 1 hour

June – 20<sup>th</sup> Asbestos Duty to Manage Practical Demonstrations. 2 hours

2 to 4 pm & 5 to 7 pm @ Woodhouse Park Activity Centre ,Almondsbury BS32 4LX

July – 9<sup>th</sup> 5 top tips for water safety – Webinar – 4pm. 1 hour.

September – 10<sup>th</sup> Legionella Risk Assessments - Webinar - Midday. 1 hour.

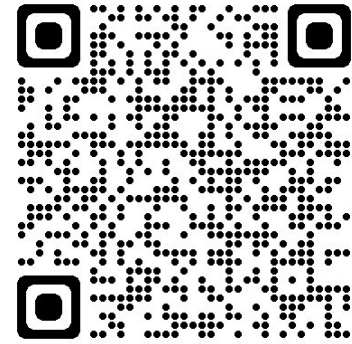
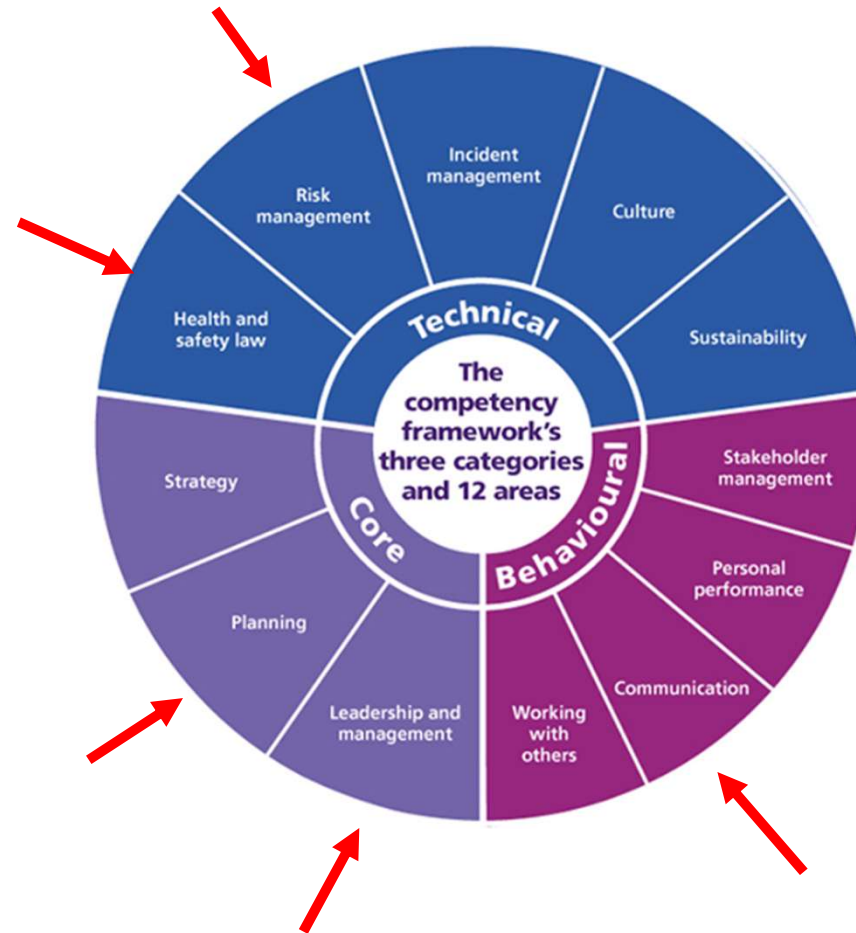
October – BAWA. CPD and Blueprint Presentation and Workshops. 1 hour

<https://iosh.com/get-involved/events/event-listings>

# IOSH Competency Framework

HSE Update -  
HSE Inspector of  
Safety  
Mr Ian Whittles

<https://iosh.com/guidance-and-resources/professionals/competency-framework>





To Join/Renew membership of AOSH visit:  
<https://www.aosh.org.uk/join-us.html>



# 2024 Future Events

All meetings are on a Thursday Morning  
and here at BAWA, (precise room may vary)



## May 16<sup>th</sup> Practical uses of Artificial Intelligence for OSH Practitioners

**Dmitry Grigorenko, Cofounder ESOSH & Regional WSH Advisor, Amazon.**

As a passionate advocate for the sensible use of artificial intelligence, Dmitry will share an insight into its potential for the Practitioner Role based upon the training he delivers on the subject across Europe. He will share why he believes he repeatedly sees the same mistakes, misconceptions and challenges which deliver poor outputs for people using the most common and freely available tools, and more importantly he'll share the tips and tricks we can use to help us get the best out of them in our roles.

## July 11<sup>th</sup> Food Safety

**Westmoreland Family – Gloucester Services**

The owner operators of one of our region's biggest success stories will share their expertise in the field of food safety. Gloucester services is a hugely popular visitor attraction in its own right these days and the challenges of having an onsite café, specialist delicatessen, open picnic areas and own staff facilities will form the basis for an interesting and useful presentation whether we work in food production as a specialism or need greater understanding from it as a topic we touch less frequently or formally.

*If you have any requests for subjects or suggestions for speakers at future events please email your ideas to; [avonoccupationalafetyhealth@gmail.com](mailto:avonoccupationalafetyhealth@gmail.com)*

www.aosh.org.uk

**AOSH**  
AVON OCCUPATIONAL SAFETY & HEALTH GROUP

Safety Groups UK  
IMPROVING HEALTH & SAFETY NATIONWIDE



# 2024 Future Events

All meetings are on a Thursday Morning  
and here at BAWA, (precise room may vary)



## Sept 19<sup>th</sup> Rebranding Safety for Operational Success

### James MacPherson, founder of Risk Fluent Consulting and The Rebranding Safety Podcast

A passionate and sometimes outspoken commentator on the broader safety world through his award-winning "Rebranding Safety Podcast", James also heads up a successful Health and Safety Consultancy. He will share his learnings from interviewing many practitioners globally and more importantly his experiences of applying those in his role as a consultant to help clients from a range of sectors develop a Framework of Reliability, Culture & Learning to improve Human and Organisational Performance.

## Nov 14<sup>th</sup> Metal Working Fluids/Welding Fumes

### Samantha Lord, HM Principal Specialist Inspector

Reducing ill health from exposure to metalworking fluids and welding fumes is part of HSE's Health and work strategy.

Occupational Lung Disease which can follow from exposures is one of HSE's strategic priorities. HSE is undertaking shared research with industry to identify good practice and is continuing to update its guidance as a result of recent developments and lessons being learnt. Sam will share these with us from her perspective as a specialist inspector in the field.

To Join/Renew membership of AOSH visit:

<https://www.aosh.org.uk/join-us.html>

*If you have any requests for subjects or suggestions for speakers at future events please email your ideas to: [avonoccupationalafetyhealth@gmail.com](mailto:avonoccupationalafetyhealth@gmail.com)*

---

# **IOSH/ AOSH** Bristol 21<sup>st</sup> March 2024

Ian Whittles

HM Inspector

Inspection Division

# Introduction

---



- HSE Internal restructure
- Overview/Context – Statistics
  - Accidents/Ill health
- Some current work streams
- A healthy reminder
- Not so healthy
- Questions?





## HSE Structure

---

- Historically main bodies
  - Construction Division & Field Operations Division
  - Alongside Chemicals, Energy, Policy....
- Internally reshuffled Construction and Field Operations
- Created Inspection Division and Investigation Division
  - Aim to allow focused activity without juggling resources on an individual level
- No Front facing Impact

# Overview - statistics

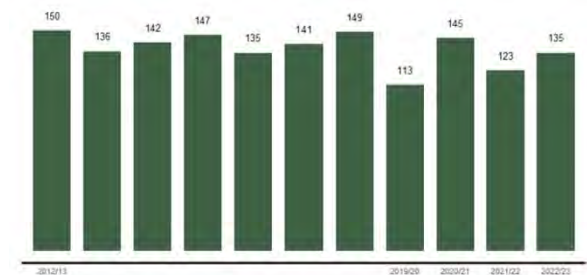


- Broadly numbers returned to levels seen pre covid with flat lining of the trends
  - Fatalities slightly up but tends to fluctuate so average trend maintained
  - Slightly down compared to last year in SW



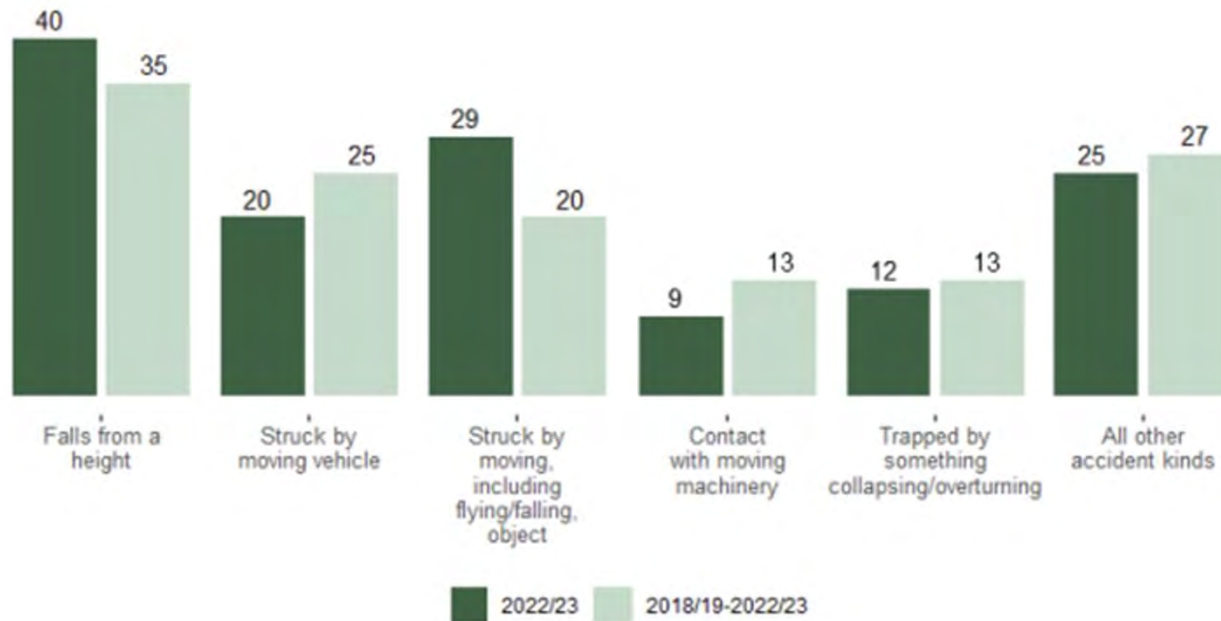
## Headlines – fatals (all industry)

- In 2022/23 there were:
  - 135 workers killed
    - Long term average is flat - 20 years ago 227
    - 45 Construction – not statistically above the average (37)
  - 68 Members of the public
    - Below average
    - Construction 3 – just below average
  - 561000 non-fatal injuries



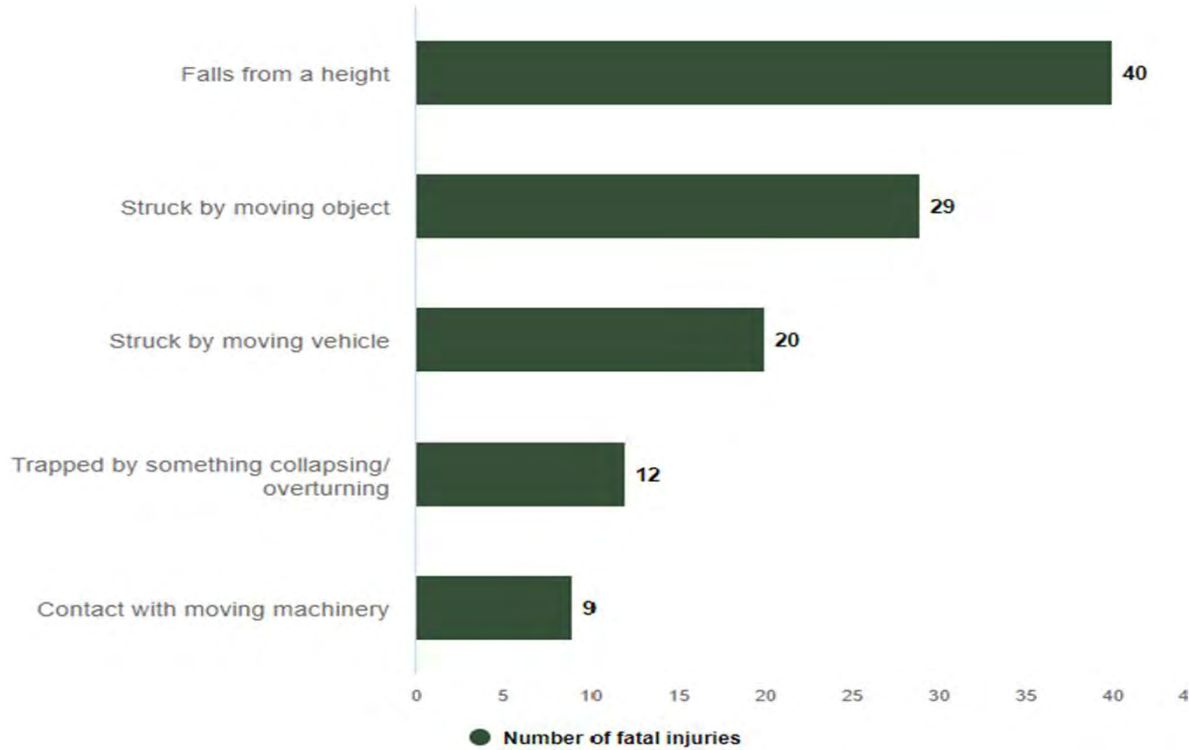
## Fatals – All industry by Incident

- No surprises in the largest cause
  - In construction 51% of all death in last 5 years falls



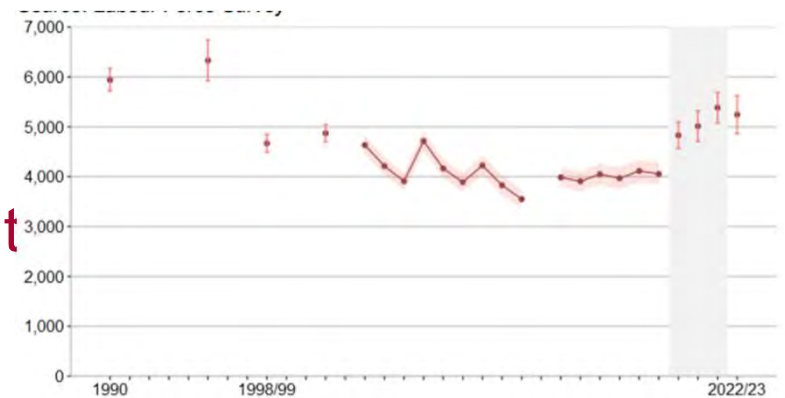
# Fatals – Types by All Industry

- A familiar picture?



## Health – All Industry

- 1.8 Million new or longstanding ill-health issues
  - Compared to circa 0.6 million injuries
- 672000 new ill health cases
- 31.5 million lost working days
- Estimated 13000 deaths yearly
- Showing signs of growth compared to pre-coronavirus data



# Health

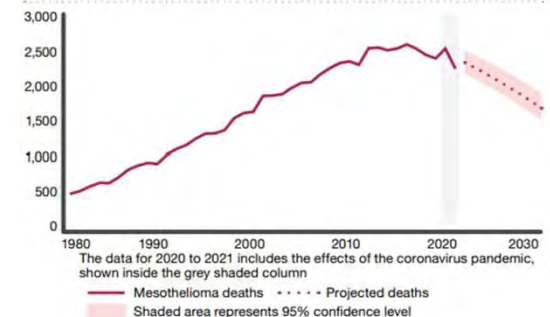


- Majority is MSD's and Stress
  - 875000 workers suffering stress or depression
    - Showing an increase
  - 473000 MSD issues
    - Largely flat lining
- Mesolithioma showing projected decrease

New and long-standing cases of work-related ill health by type, 2022/23



Annual mesothelioma deaths and future projections to 2030



## Some Current Work Streams

- Construction
  - Dust Kills campaign
    - Continuation of the annual respiratory risk focus
  - Manual Handling campaign
  - Review of Asbestos legislation
    - Research into survey quality
- Expansion of the Working Minds campaign
  - 6 new trade body partners signed up

**DUST. IT CAN KILL.**

**NOT TODAY. BUT YEARS DOWN THE LINE.**

**DON'T RISK YOUR OR YOUR WORKERS LONG-TERM HEALTH. PROTECT LUNGS FROM DUST.**

**MOVING AND HANDLING REALLY MATTERS**

**WORKING MINDS**

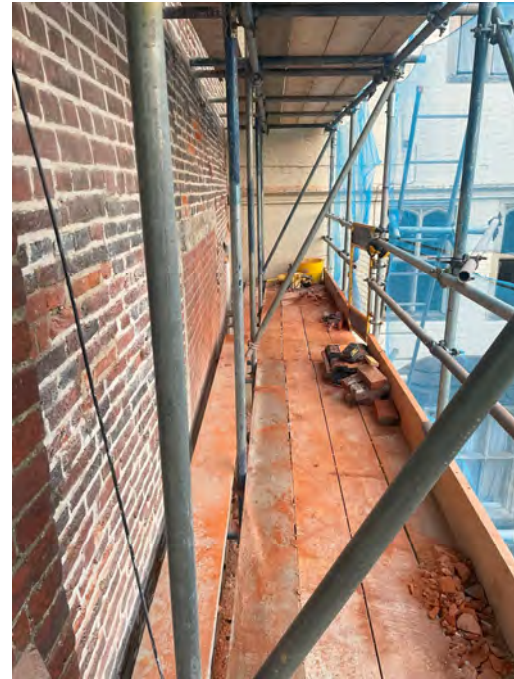
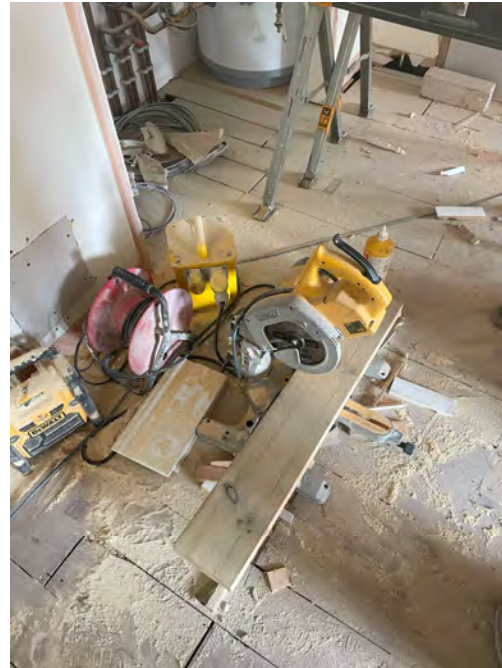
**MAKE IT ROUTINE**

REACH OUT → RECOGNISE → RESPOND → REFLECT



## Some Current Work Streams

- Construction



## Some Current Work Streams

- Fabricated Metals
  - Metal Working Fluids
    - Water based fluids
    - Microbiological testing/pH testing
    - Mist control - LEV, air lines
    - Health Surveillance
  - Welding
    - LEV & RPE
    - General ventilation



## Some Current Work Streams

- Woodworking
  - Wood dust
    - All wood dust, not just hardwood, not MDF...
    - LEV present and maintained
    - Pressure gauges to monitor
    - FFP3 dust masks, face fitted
    - Health Surveillance
  - Dermatitis
    - Handling and Health Surveillance



## Some Current Work Streams

- Dichloromethane – Alloy wheel stripping
  - Suspected carcinogen
  - Narcotic. Dermatitis
  - LEV
  - RPE/PPE
  - Lifting equipment
  - Rinse tank
  - Preferably substitute!



## Some Current Work Streams

---

- Asbestos Duty to manage
  - Focus on schools/hospitals
  - Evaluation of management systems
    - Asbestos survey
    - Asbestos register
    - Contractor procedures
      - Ensuring refurb survey update
- RAAC
  - Surveying being chased up at same visits

## A Healthy Reminder

---

- Consider the “Health” in Health and Safety
  - Noise
  - Vibration
  - Dust
  - Dermatitis
  - Ergonomics
  - Lead, zoonoses, asbestos.....
- Sustained push on Health in plans

## A Healthy Reminder

---

- Manage the risks
  - Lots of tools to assist in determining exposure
    - HAVS, Noise calculators
    - MAC tool
    - ART tool
    - RAPP tool
  - Designed to help identify key risks to focus on

# A Healthy Reminder



**G = GREEN - Low level of risk** Although the risk is low, consider the exposure levels for vulnerable groups such as pregnant women, disabled, recently injured, young or inexperienced workers.

**A = AMBER - Medium level of risk** Examine tasks closely.

**R = RED - High level of risk** Prompt action needed. This may expose a significant proportion of the working population to risk of injury.

**P = PURPLE - Unacceptable level of risk** Such operations may represent a serious risk of injury and must be improved.

### Daily Noise Exposure Action Value Calculator

The *Control of Noise at Work Regulations 2005* define Lower and Upper Exposure Action Values (LEAV and UEAV) of 80 and 85 dB(A). This calculator estimates the **unprotected daily noise exposures** of workers for comparison with the LEAV and UEAV.

Task name / description	Noise level: $L_{Aeq}$ (dB(A))	Points per hour	Time (in hh:mm) to		Daily exposure times		Personal noise exposure per task (dB(A))	Personal exposure points per task
			LEAV	UEAV	(hours)	(mins)		
Task 1								
Task 2								
Task 3								
Task 4								
Task 5								
Task 6								
Task 7								
					Total daily exposure time (hh:mm)	Daily exposure, $L_{Aeq}$ (dB(A))	Total daily exposure points	

### HAND-ARM VIBRATION EXPOSURE CALCULATOR

Version 6.3 September 2023

Company name/work area: \_\_\_\_\_  
Employee ID and/or task name: \_\_\_\_\_

Tool Use drop-down list for HSE recommended initial tool magnitude value (range for tool shown in brackets) or manually add tool type and/or magnitude in this column and the Vibration magnitude in "User" column.	Vibration magnitude $m/s^2$		Task Points per hour	Time to reach EAV hh:mm	Time to reach ELV hh:mm	Exposure duration		Partial exposure $m/s^2 A(8)$	Partial exposure Points
	HSE	User				hours	mins.		
INSTRUCTIONS: Enter vibration magnitudes and exposure durations (for an individual worker or a task carried out by several workers) in the white areas. Results are displayed in the yellow areas. Additional information such as company name, worker name may be added if printing or saving the calculation.								Daily exposure $m/s^2 A(8)$	Daily exposure points
Exposure calculation by: _____ Job role: _____								Calculation date: 07/12/2023	

### C5 Hand/finger grip

The hands or fingers hold objects in a:

	L	R
Power grip or do not grip awkwardly	0	0
Pinch or wide finger grip for part of the time	1	1
Pinch or wide finger grip for more than half of the time	2	2



## A Healthy Reminder

---

- Health Surveillance Programme
  - Some set in statute trigger levels
    - e.g. Lead, Noise, Vibration, Radiation
  - Others when exposed to a trigger
    - e.g. Astmagens, skin senitisers
  - May require an Occupational Health Provider
    - BOHS provide a register
  - Initial screening
    - Some initial questionnaires on website - in house use

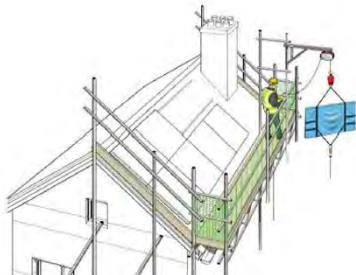
## A Healthy Reminder

---

- Health Surveillance Programme
  - Consult & Educate operatives
    - Duty to cooperate
  - Act on results
    - Elements of medical confidence however general trends should be considered
    - Consider alternative work if required
- Record keeping
  - Potentially up to 40 years

## Not So Healthy?

- Everyones Energy Uk Limited
  - 04<sup>th</sup> July 2022
  - IP fell while installing solar panels
  - Significant Brain injuries
  - Fined £28k (12.03.24)
  - £6634.56 costs,
  - £2k victim surcharge
  - CITB Solar panel installation leaflet



# Not So Healthy?



# Not So Healthy?



## The Future?

---

- A focus on Health in all industry
- Some Targeted campaigns
  - Recladding, Agriculture
- Put the Health in Health and Safety but don't let the Safety slip!
- Thank you for Listening
- Questions?

Ian Whittles

HSE



Bristol and West  
Branch

Powered by  
**volunteers**

## **We hope you have enjoyed our session today**

- **Thank you to you all for taking the time to attend today.**
- **Thank you to all our speaker and everyone for sharing your knowledge and experience with us.**
- **Thank you to the committee members for setting up**
- **We are looking forward to welcoming you all at our future meetings**
- **Please take the time to complete the short post event survey as your feedback is truly valued and will be utilised to shape future events**
- **Stay safe, well and connected**
- **Safe Journey Home/Work**

# Stay Connected

**Email:** [bristolwest@ioshnetworks.com](mailto:bristolwest@ioshnetworks.com)



**LinkedIn:** [www.linkedin.com/company/iosh-bristol-and-west/](http://www.linkedin.com/company/iosh-bristol-and-west/)







Bristol and West  
Branch

Powered by  
**volunteers**

# Thank you

Email: [bristolwest@ioshnetworks.com](mailto:bristolwest@ioshnetworks.com)

